

## PDGF-BB induces intratumoral lymphangiogenesis and promotes lymphatic metastasis

Renhai Cao,<sup>1,6</sup> Meit A. Björndahl,<sup>1,6</sup> Piotr Religa,<sup>1</sup> Steve Clasper,<sup>5</sup> Stina Garvin,<sup>1</sup> Dagmar Galter,<sup>2</sup> Björn Meister,<sup>2</sup> Fumitaka Ikomi,<sup>3</sup> Katerina Tritsarlis,<sup>4</sup> Steen Dissing,<sup>4</sup> Toshio Ohhashi,<sup>3</sup> David G. Jackson,<sup>5</sup> and Yihai Cao<sup>1,\*</sup>

<sup>1</sup>Laboratory of Angiogenesis Research, Microbiology and Tumor Biology Center, Karolinska Institutet, 171 77, Stockholm, Sweden

<sup>2</sup>Department of Neuroscience, Karolinska Institutet, 171 77, Stockholm, Sweden

<sup>3</sup>The 1st Department of Physiology, Shinshu University School of Medicine, 3-1-1 Asahi, Matsumoto 390-8621, Japan

<sup>4</sup>Department of Medical Physiology, The Panum Institute, University of Copenhagen, DK-2200, Copenhagen, Denmark

<sup>5</sup>Medical Research Council Human Immunology Unit, Weatherall Institute of Molecular Medicine, John Radcliffe Hospital, Oxford OX3 9DS, United Kingdom

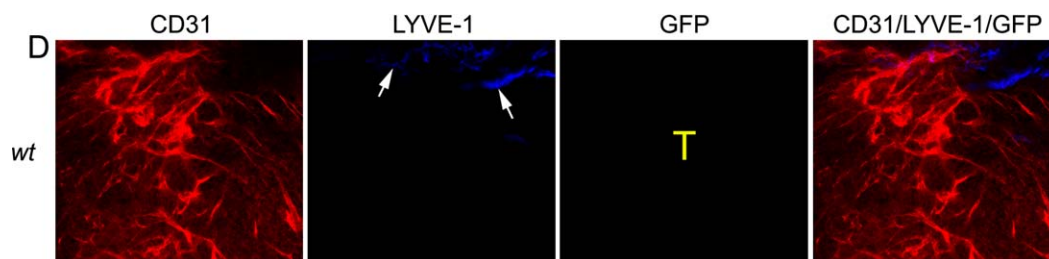
<sup>6</sup>These authors contributed equally to this work.

\*Correspondence: [yihai.cao@mtc.ki.se](mailto:yihai.cao@mtc.ki.se)

(Cancer Cell 6, 333–345; October 2004)

In this paper, the images shown in Figure 7D are incorrect; these images were mistakenly used during preparation of the figure. The corrected panel is shown here (Figure 1). The text, the figure legends, the arrangement of all figures, all quantification graphs, and the conclusions of this article are not affected by this correction.

The authors apologize for this error.



**Figure 1.** Corrected Figure 7D

DOI 10.1016/j.ccr.2006.02.022